

DUBLIN CITY COUNCIL
SOUTH CENTRAL AREA COMMITTEE
20th September 2023

Q1 Councillor Michael Pidgeon

To ask the Director of Services when the southern half of Lansdowne Valley Park is going to be reopened. The park has been closed for several years, since the pitch and putt course closed. Many local families with small children are left without access to a park in walking distance. The park will have to reopen to complete the Camac Greenway, and provide a direct cycling route from Walkinstown to Inchicore, but it should open before then.

Reply

Parks are working on plans to reopen this section of Lansdowne Valley Park that was formerly a Pitch and Putt course as part of the wider Lansdowne Valley Park. As part of this a new network of footpaths will need to be designed, tendered and constructed. The councillor will be updated in due course.

Contact: Brid Brosnan, A/Snr Exec Parks and Landscape Officer
Email: parks@dublincity.ie

Q2 Councillor Michael Pidgeon

To ask the Director of Services if it has plans to plant an orchard, pocket forest, or stepping stone forest on Walkinstown Green. Local residents would like to see some of the green space used to promote biodiversity in the area.

Reply

Parks will arrange for the planting of some fruit trees on this location in the current planting season.

Contact: Brid Brosnan, A/Snr Exec Parks and Landscape Officer
Email: parks@dublincity.ie

Q3 Councillor Michael Pidgeon

To ask the Director of Services to address the parking issues on Slievemore Road in Drimnagh. The overspill from the hospital means cars are parked on footpaths, on double-yellow lines, and on corners. The situation is unsafe for pedestrians, cyclists, and drivers. Residents have trouble receiving deliveries, bin collections sometimes can't take place, and emergency vehicles would have trouble accessing some houses on the street.

Reply

Dublin Street Parking Services will be tasked to patrol the area and carry out enforcement action on illegally parked vehicles.

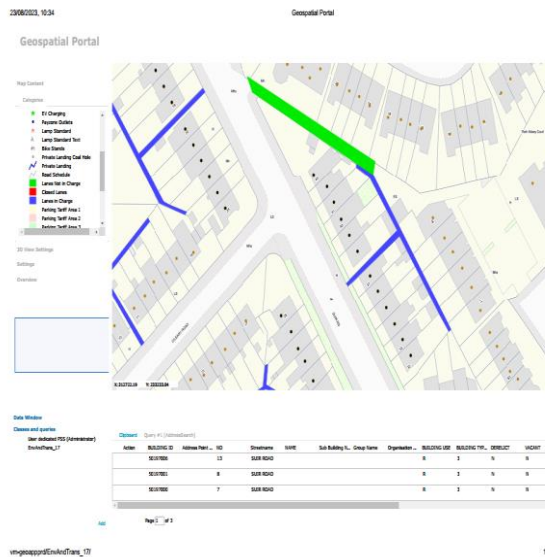
Contact: Linda McDonald, Administrative Officer
Email: linda.mcdonald@dublincity.ie

Q4 **Councillor Michael Pidgeon**

To ask the Director of Services to improve the laneway connecting Suir Road and Rothe Abbey. The path is used regularly by residents and is partially owned by Dublin City Council, but needs resurfacing and a light to make it safe.

Reply

I have investigated this laneway and find that it is not in the charge of DCC and therefore outside our remit to carry out repairs at this location. I enclose a map with items coloured in green as being not in charge.



Contact: Carl Ryan, Operations & South Central Area Engineer
Email: roadmaintenance@dublincity.ie

Q5 **Councillor Daithí Doolan**

To ask the Director of Services to construct **(details supplied)** in Walkinstown.

Reply

Reply issued directly to Councillor

Q6 **Councillor Daithí Doolan**

To ask the Director of Services to clarify how will the 3 tonne truck restriction be implemented during the construction at the Kestrel site, Walkinstown?

Reply

There are two 3.5 Tonne No Parking signs on Bunting Road as you enter from Cromwellsfort Rd.

Under Statutory Instrument SI. no 182 /1997 section 38 of the Road Traffic (Traffic and Parking) Regulations :-

38. (1) (a) Where traffic sign number RUS 019 [Prohibition on Parking] is provided at the entrance to an area in association with an information plate containing a symbol to

indicate a large vehicle, a vehicle whose unladen weight exceeds the weight specified on the information plate, shall not be parked in the said area.

(b) Paragraph (a) shall not apply to a large vehicle parked while goods are being loaded in or on to it or unloaded from it, for a period not exceeding thirty minutes from the commencement of the parking.

This regulation shall not apply to large vehicle parked while goods are being loaded / unloaded for up to 30 minutes. It is a matter of Parking Enforcement to enforce after this duration.

Contact: Neil O Donoghue, South City Executive, Transport Advisory Group
Email: neil.odonogue@dublincity.ie

Q7 Councillor Daithí Doolan

To ask the Director of Services for an update on the cycle-track for Bunting Road, Walkinstown.

Reply

The cycling facilities on Bunting Road form part of the NTA Bus Connect scheme from Tallaght/Clondalkin to City Centre. This scheme has been submitted to An Board Pleanála. A decision on this scheme has not been made.

Contact: Niall Bolger Acting Senior Exec ITS Officer
Email: niall.bolger@dublincity.ie

Q8 Councillor Daithí Doolan

To ask the Director of Services to improve public lighting on Bunting Road and Thomas Moore Rd, Walkinstown.

Reply

A lighting assessment will be carried out on Bunting Road and on Thomas Moore Road to assess whether additional or improved lighting is required at these locations.

The existing public lighting on Bunting Road and Thomas Moore Road will be upgraded to LED under the Public Lighting Upgrade Project, although an exact timeframe for these future improvements cannot be provided at this time, other than to say they will be upgraded within the next five years or so.

Until such time as the existing lights on these roads are replaced with the LED lights, they will continue to be night checked and we will continue to carry out routine maintenance works on the existing lights and will replace existing lamps as required.

Contact: Karen Leeson, Executive Engineer, Public Lighting Services
Email: karen.leeson@dublincity.ie

Q9 **Councillor Daithí Doolan**

To ask the Director of Services why *(details supplied)* remains empty?

Reply

This unit has been refurbished by Housing Maintenance and is with Housing Allocations for re-tenanting.

Contact: Clive Ahern, Senior Executive Officer, Housing Maintenance
Email: clive.ahern@dublincity.ie

Q10 **Councillor Daithí Doolan**

To ask the Director of Services for an update on DCC's plans for Mulberry Cottages, Chapelizod.

Reply

The City Council has issued a tender for the engagement of a design team to prepare a design proposal for the refurbishment of these properties. It is envisaged once these plans have been prepared and have received the necessary statutory approvals that a building contractor will be engaged to complete the refurbishment of same.

Contact: John Ryan, Administrative Officer, Housing Development
Email: john.ryan@dublincity.ie

Q11 **Councillor Daithí Doolan**

To ask the Director of Services for an update on when DCC will be introducing traffic calming for Dowland Rd, Walkinstown.

Reply

Based on the assessment of the Transport Advisory Group engineer, the Transport Advisory Group will not be providing further additional Traffic Calming measures on Dowland Road, D12.

There are speed ramps. 'Children Crossing' signs are already provided at the entrances to Dowland Road.

The Transport Advisory Group have recently recommended installing Yield markings and erecting a Yield sign at the junction of Dowland Road with Moeran Road.

The Transport Advisory Group engineer contacted the Dublin City Council Maintenance Engineer regarding the condition of the ramps. The Road Maintenance Engineer stated that upon inspection the ramps are in a good condition and meet Dublin City Council standards. Therefore, the Transport Advisory Group does not recommend raising the height of speed ramps on Dowland Road. Speeding is a matter for An Garda Síochána to enforce penalties and is not dealt with by the Transport Advisory Group.

Contact: Maire Nic Reamoinn, Transport Advisory Group
South Central Area Engineer, Environment & Transportation
Email: maire.nicreamoinn@dublincity.ie

Q12 Councillor Daithí Doolan

To ask the Director of Services for an update and timeframe for work to commence on Cherry Orchard Park and will DCC consider installing Park benches and bins as part of the works?

Reply

A feasibility report and budget estimate is currently being finalised for the Cherry Orchard Park with the intention to bring the project through detailed design in 2024. Park benches and bins will be part of the improvement works.

Contact: Suzanne O'Connell, Landscape Architect
Email: suzanne.oconnell@dublincity.ie

Q13 Councillor Daithí Doolan

To ask the Director of Services (*details supplied*).

Reply

Reply issued directly to Councillor.

Q14 Councillor Sophie Nicoullaud

To ask the Director of Services if Moeran Road junction with Percy French and Dowland Roads were assessed and if so can signage be erected with stop or yield posts? When will the sign post be erected?

Reply

The Transport Advisory Group engineer assessed the junctions of Moeran Road with Dowland Road (SR No. 7034109) and Moeran Road with Percy French Road (SR No.7034110). The Transport Advisory Group has recommended the provision of Yield markings and Yield signs at these junctions. The requests have been moved onto the next stages of the TAG process. The process has several stages before the requests are added to the Works schedule and they will be installed in the near future.

Contact: Máire Nic Réamoinn, Transport Advisory Group South Central Area Engineer, Environment & Transportation Department,
Email: maire.nicreamoinn@dublincity.ie

Q15 Councillor Sophie Nicoullaud

To ask the Director of Services to paint the concrete bollards at the cul de sac of St. Mary's Drive. To propose a solution for that cul de sac to make sure emergency services can access the end of the cul de sac as the road with 2 cars parked on the same level at each side blocks the way for larger vehicles.

Reply

We will organise for these 8 no. bollards to be repainted when I have a painter available.

Contact: Carl Ryan, Executive Engineer, Environment & Transportation
Email: Carl.ryan@dublincity.ie

The Transport Advisory Group recommends installing Double Yellow Lines on St. Mary's Drive along the southern kerb of the cul-de-sac. This is to prevent vehicles parking in the cul-de-sac in order to facilitate the access of emergency service vehicles.

*Contact: Maire Nic Réamoinn, South Central Area Engineer,
Transport Advisory Group, Environment & Transportation Department,*
Email: maire.nicreamoinn@dublincity.ie

Q16 Councillor Sophie Nicoullaud

To ask the Director of Services fix the flooding issue inside (**details supplied**). When raining, there is about 3 cm of water on the floor within the flat in the closet.

Reply

Housing Maintenance has carried out an inspection here, and identified the works that need to be undertaken. A specialist contractor will be engaged to power flush the pipe with a jet cleaner and remove any blockage and seal up afterwards.

Contact: Clive Ahern, Senior Executive Officer, Housing Maintenance
Email: clive.ahern@dublincity.ie

Q17 Councillor Sophie Nicoullaud

To ask the Director of Services for DCC community officers to engage with the management of The Davitt (managed by Tuath Housing) to engage with the residents to form a residents group. Communication from the outside to the management stops at the management with the information not going down to any of the residents.

Reply

The area office will contact Tuath approved housing body in relation to the formation of a residents association.

Contact: Alan Sherry, Area Manager, Ballyfermot/Drimnagh
Email: alan.sherry@dublincity.ie

Q18 Councillor Sophie Nicoullaud

To ask the Director of Services to engage with the management of the Davitt to let social housing residents wishing to rent out a parking space to do so. A resident has approached the management but he is left with no reply.

Reply

The Davitt development consists of 265 "Build to Rent" apartments. 119 basement car spaces are associated with the planning grant.

The Housing Department secured 26 leased units through the Part V process and negotiated an additional four units. The agreed rent is solely for the residential element of the development and car parking is not included.

All tenants on nomination were informed in advance that there was no car parking attached to the units.

Dublin City Council recently contacted the management of The Davitt complex in relation to parking. They have stated that all parking bays have been assigned and none are currently available. A number of bays may appear available but these are electric charging bays, four in total that are a condition/requirement of the planning permission. There is also a bay for the introduction of a GO car / shared car system.

Dublin City Council will keep this matter under review however the situation is as agreed per Part V and may only change should the management company identify available spaces.

Contact: Alana Dunne, Housing Advisor, Long Term Leasing
Email: alana.dunne@dublincity.ie

Q19 Councillor Sophie Nicoulaud

To ask the Director of Services to demand that the outside wheelchair elevators in The Davitt be fixed? They have been broken for month so not providing universal access to some of apartment block entrances, including the social house one.

Reply

This issue has been reported to the Management Company of The Davitt and Dublin City Council has been advised that they are working on resolving the matter. Tuath Housing has a meeting on-site on Tuesday 12th September and will seek an update and agree a timeline for the work to be completed by.

Contact: Alana Dunne, Housing Advisor, Long Term Leasing
Email: alana.dunne@dublincity.ie

Q20 Councillor Sophie Nicoulaud

To ask the Director of Services to engage with residents group to envisage installing planters to block illegal parking at suitable location to find a compromise for DCC not installing bollards and yellow lines at corners of Rafter's Road along old funeral homes and around Galtymore and Sperring Road. Can residents group send a list of proposal for planters to do so?

Reply

The Public Domain Officer, for the Ballyfermot- Drimnagh Area, Mr Liam Hendrick, will happily engage with the local residents group to discuss and review the illegal parking situation at the noted locations.

If the Councillor could pass on their contact details to Mr Liam Hendrick, email; liam.hendrick@dublincity.ie.

Contact: Liam Hendrick, Public Domain Officer, Ballyfermot Drimnagh Area
Email: liam.hendrick@dublincity.ie

Q21 Councillor Sophie Nicoulaud

To ask the Director of Services to fix the through road taken in charge in CedarBrook? The road is not in very good condition and speed bumps need repair.

Reply

Unfortunately the cedar brook estate in Cherry Orchard is not in the charge of Dublin City Council and is therefore a private development. It would be a matter for the management company to carry out all necessary repairs to this development.

Contact: Carl Ryan, Operations & South Central Area Engineer.

Email: roadmaintenance@dublincity.ie

Q22 Councillor Sophie Nicoullaud

To ask the Director of Services to ask the legal department and or the planning department to provide the date DCC (or the Corporation as it was probably called back then) received the management scheme from the CedarBrook complex in Cherry Orchard? The planning conditions back then stipulated that the developer shall submit a management plan to the planning authority for written agreement prior to occupation of any of the dwellings for Cedar Brook as including maintenance until taking-in-charge by the Local Authority of roads, open spaces, car parks, public lighting, sewers, watermains and drains.

Reply

The Planning Authority has carried out a search of the planning file, plan reference 2113/01. There are no documents relating to the management agreement as outlined in condition no. 9.

“As the Corporation will not be taking the entire development in charge, the developer shall enter into a management agreement with all future owners and occupiers to carry out the maintenance and repair of relevant areas within the curtilage of the site. Such agreement shall cover the roads, footpaths, car park and all services, together with soft and hard landscaping excluding private areas, and shall make it clear that the Corporation shall not have responsibility in these areas. The details of the above management scheme shall be submitted to the planning authority for written agreement prior to occupation of any of the dwellings.”

Contact: Shelly O’Riordan, A / Administrative Officer

Email: shelly.oriordan@dublincity.ie

Q23 Councillor Vincent Jackson

To ask the Director of Services to please look at the enclosed (**details supplied**)

Reply

The Ballyfermot Housing Team and Dublin City Welfare Section have made a number of calls to the address. While the tenant is not engaging with Dublin City Council at present we will continue to call and will provide skip bags to the tenant to resolve the current problem.

Contact: Alan Sherry, Local Area Manager, Ballyfermot/Drimnagh

Email: alan.sherry@dublincity.ie

Reply

In addition to the Area Housing Managers reply Waste enforcement have contacted the Area office to see if we assist with this matter under the Waste management act 1996. We will carry out a possible inspection of the premises and report back with our findings.

Contact: *Padraic Lalor, Senior Staff Officer*
Email: Padraic.lalor@dublincity.ie

Q24 Councillor Vincent Jackson

To ask the Director of Services *please indicate to me who is responsible legally in the following situation (details supplied)*

Reply

Reply issued directly to Councillor.

Q25 Councillor Vincent Jackson

To ask the Director of Services to please try and impress upon a number of vacant property owners in Ballyfermot the urgency to repurpose these units for commercial / retail purposes. It is shocking to see these units create such a negative impact on this once thriving area. Our planning laws has facilitated poor decisions and the loss of reasonably sized units by allowing subdivision of units over the years.

Reply

If the member provides details of the relevant properties to the Area Office the issue will be investigated.

Contact: *Alan Sherry, Local Area Manager, Ballyfermot/Drimnagh*
Email: alan.sherry@dublincity.ie

Q26 Councillor Vincent Jackson

To ask the Director of Services to support the work of Ballyfermot Environmental Group by levelling the raised area around the Name Stone on the large open space on Drumfinn Ave, Balyfermot, Dublin 10. The group edged the whole park during the summer and cut down weeds, removed sleepers and now need the area levelled and graded to stop trip hazards etc. going forward. The work would allow much better sustainable maintenance, grass cutting here.

Reply

Parks can schedule some improvement works at this location over the coming weeks.

Contact: *Brid Brosnan, A/Snr Exec Parks and Landscape Officer*
Email: parks@dublincity.ie

Q27 Councillor Vincent Jackson

To ask the Director of Services to please give me full details of income limits for single, couples and those with children applying to go on the Social housing list with Dublin City Council. Due to growth in property prices and some small improvements in weekly wages the bands need to be adjusted to reflect the savage increase in utility and foods etc.

Reply

Please see attached document with the current income limits as set out by the Department of Housing, Heritage and Local Government. These limits were revised on 1st January 2023.

Contact: *Sandra Barry, A/Allocations Officer, Housing & Community Services*

Email: sandra.barry@dublincity.ie

Q28 Councillor Vincent Jackson

To ask the Director of Services to look at the following housing (**details supplied**)

Reply

The above applicant is on the Older Persons Housing List with an application date of 26/1/15, and the applicant holds the following positions on this list:

Area	Bedsize	Position
Area J	1	51

The applicant's interest is noted in Springvale. Dublin City Council allocates properties based on time on the list and currently there are applicants of longer standing who have to be considered as suitable vacancies arise. It is not possible to indicate accurately the prospect of an offer for any applicant. The number of vacancies arising will be a determining factor in the length of time applicants could expect to be on the waiting list.

The applicants should keep checking the Dublin City Council website for any Choice Based Lettings that may become available in their area of choice.

The applicants may be eligible for HAP which will provide them with financial assistance towards the cost of renting another property. Should the applicant wish to apply for the HAP scheme, they should make contact with the Allocations Section with income details for the previous 12 months where a Housing Advisor can provide information and advice on the scheme.

Contact: Sandra Barry, A/Allocations Officer, Housing & Community Services
Email: Sandra.barry@dublincity.ie

Q29 Councillor Vincent Jackson

To ask the Director of Services look into the following housing issue (**details supplied**)

Reply

Housing Maintenance will examine the various matters raised above and revert back with a detailed reply.

Contact: Clive Ahern, Senior Executive Officer, Housing Maintenance
Email: clive.ahern@dublincity.ie

Q30 Councillor Vincent Jackson

To ask the Director of Services look into the following housing matter (**details supplied**)

Reply

The above applicant is on the Transfer List with an application date of 4/11/2020, and the applicant holds the following positions on this list:

Area	Bedsize	Position
Area J	2	322

Area K	2	415
Area L	2	289

Dublin City Council allocates properties based on time on the list and currently there are applicants of longer standing who have to be considered as suitable vacancies arise. It is not possible to indicate accurately the prospect of an offer for any applicant. The number of vacancies arising will be a determining factor in the length of time applicants could expect to be on the waiting list.

The applicants should keep checking the Dublin City Council website for any Choice Based Lettings that may become available in their area of choice.

Contact: *Sandra Barry, A/Allocations Officer, Housing & Community Services*
Email: Sandra.barry@dublincity.ie

Q31 Councillor Vincent Jackson

To ask the Director of Services look into the following (*details supplied*)

Reply

The Planning Enforcement Section will examine this matter, including carrying out a site inspection to ascertain the legality of the use and associated lighting concerned. A more detailed response will be sent directly to the Councillor on completion of this investigation.

Contact: *John Downey, A/Planning Enforcement Manager*
Email: john.downey@dublincity.ie